

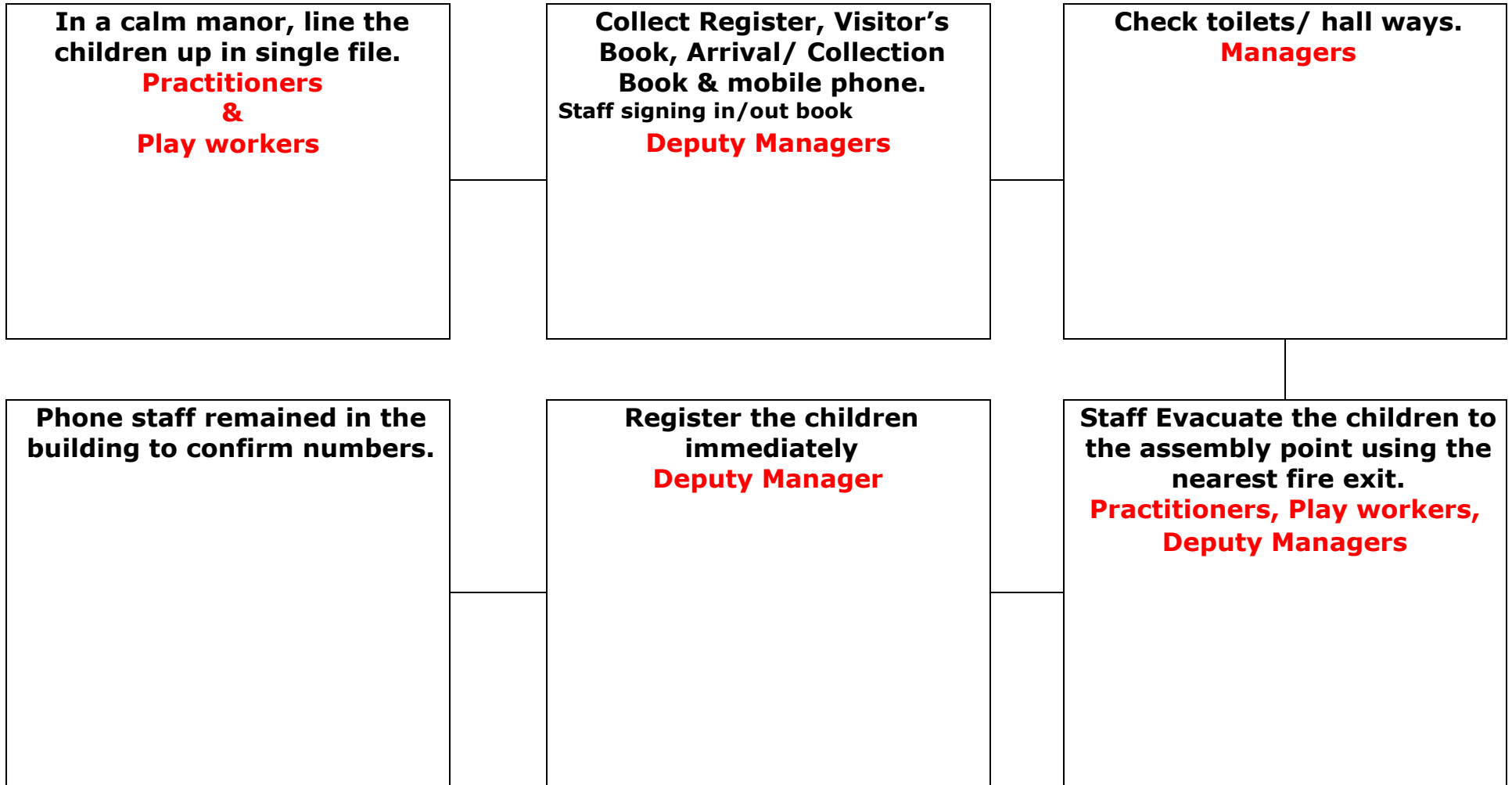


Funtastic Club Policies & Procedures

Number 12

Fire Practice and Evacuation Policies

Fire Practice and Evacuation Procedure in the Case of a Fire



Signed on behalf of the setting:

Print Name: Regine Natchoo,

Updated on the 01.09.2013

Date to be reviewed: 15th September 2014

Fire Practice and Evacuation Procedure in the Case of a Fire

<p>Remaining Staff exit the building.</p> <p>Managers</p>	<p>All children and staff remain outside until the fire bell has stopped and confirmation has been given that it is safe to re-enter the building.</p>	<p>Register the children once returned to the building.</p> <p>Manager/Deputy Manager</p>
---	---	---


Activity Area
Funtastic Room
Library


Fire Exit
Club Exit/Entrance
Hall Fire Exit

Assessment
Assessment
Assessment

Fire Practice and Evacuation Procedure in the Case of a Fire

Hall
Classroom


Hall Fire Exit


Assembly Point


Fire Practice and Evacuation Procedure in the Case of a Fire

Assessor Name	Updated on	Reviewed on	Signature
Regine Natchoo	September 17	September 18	R.Natchoo
Regine Natchoo	September 18	September 19	R.Natchoo
Regine Natchoo	September 19	September 20	R.Natchoo