

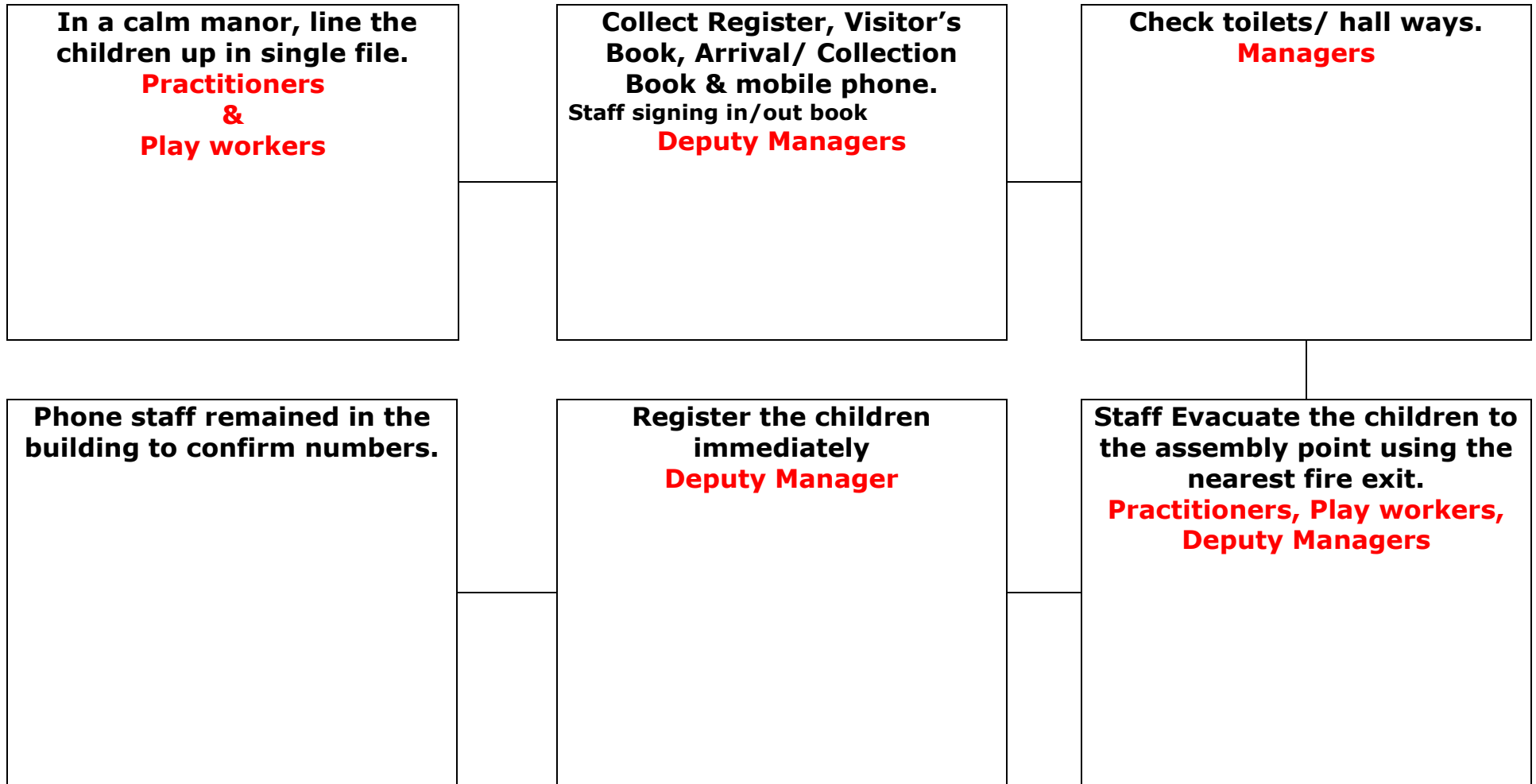


# Funtastic Club Policies & Procedures

## Number 12

### Fire Practice and Evacuation Policies

# Fire Practice and Evacuation Procedure in the Case of a Fire



Signed on behalf of the setting:

Print Name: Regine Natchoo,

Updated on the 01.09.2013

Date to be reviewed: 15<sup>th</sup> September 2014

# Fire Practice and Evacuation Procedure in the Case of a Fire

**Remaining Staff exit the building.**

**Managers**

**All children and staff remain outside until the fire bell has stopped and confirmation has been given that it is safe to re-enter the building.**

**Register the children once returned to the building.**

**Manager/Deputy Manager**

## Activity Area

Funtastic Room

Library

Hall

Classroom



## Fire Exit

Club Exit/Entrance

Hall Fire Exit

Hall Fire Exit



## Assembly Point

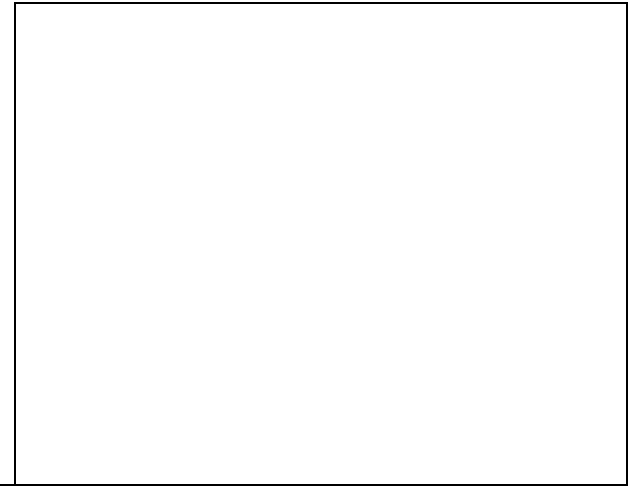
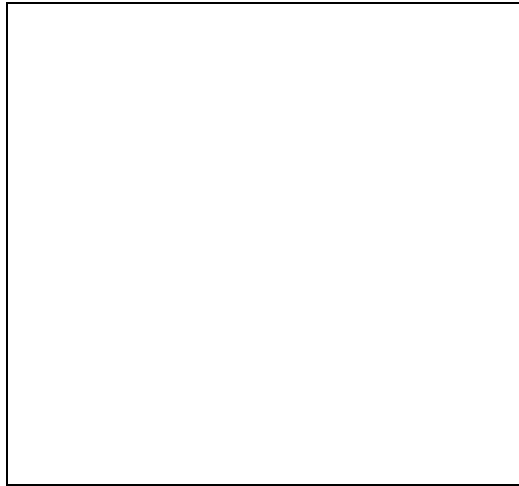
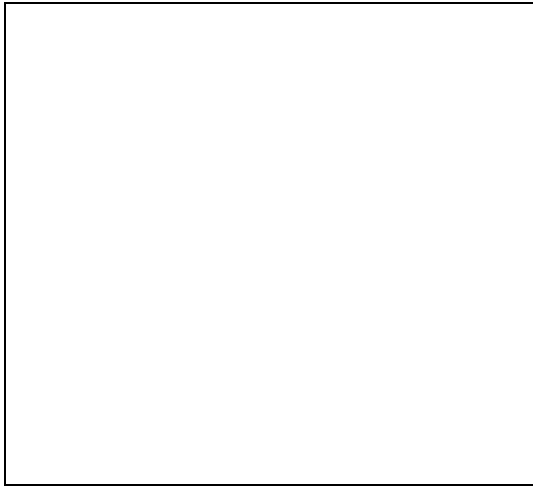
Assembly Point 31

Assembly Point 31

Assembly Point 31



# Fire Practice and Evacuation Procedure in the Case of a Fire



Assessor Name	Updated on	Reviewed on	Signature
Regine Natchoo	September 17	September 18	R.Natchoo
Regine Natchoo	September 18	September 19	R.Natchoo